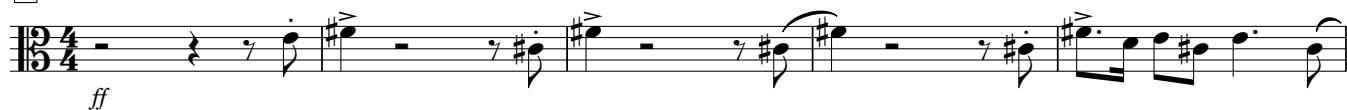


Violas

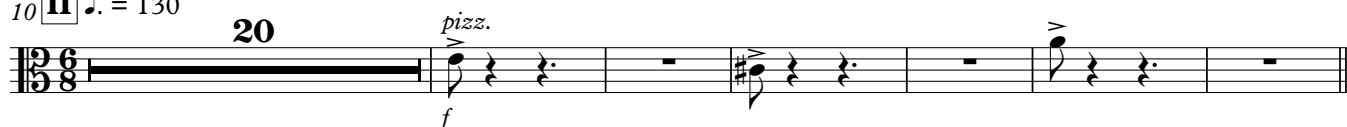
a Fissure

Louislouis

I ♩ = 130



10 II ♩ = 130



36 arco



43



50



58



66



73



79



84



90



96 *arco*

mf *f*

100

108

113

124 **III** ♩ = 130 **12**

f Dig in! Dig in! Dig in! *f*

141

mp

152

f

160 **IV**

fff

165 ♩ = 130 **15**

pp

188

f

195

ff

202

fff

207

The musical score for Violas spans measures 96 to 207. It begins with a half-note melody in measure 96, marked *arco*, *mf*, and *f*. Measures 100-107 feature a rhythmic pattern of eighth notes with accents. Measure 108 has a similar pattern. Measures 113-119 are a half-note melody. Measure 124 starts a new section with a 4/4 time signature, marked **III**, ♩ = 130, and **12**. It includes the instruction "Dig in!" and dynamics *f*. Measures 141-149 feature a half-note melody with a crescendo and decrescendo hairpin, marked *mp*. Measure 152 has a 4-measure rest followed by a half-note melody. Measure 160 starts a new section with a 6/8 time signature, marked **IV**, and *fff*. Measure 165 has a 15-measure rest followed by a half-note melody, marked *pp*. Measures 188-194 are a half-note melody, marked *f*. Measures 195-201 are a half-note melody, marked *ff*. Measures 202-206 are a half-note melody, marked *fff*. Measure 207 is a half-note melody.